

A Sampling from the Annie Shapira Paper Family Album

A precious photo album, created and carefully tended by Mary Paper throughout her life, was donated to the Ramsey County Historical Society in 2019. It provides a glimpse into the life of Mary's mother, Annie Shapira Paper, who became the first donor to the Saint Paul Foundation in 1944. The four-inch thick album, with photographs from the early 1900s to the 1960s, is a rare and delightful display of the arc of experiences for a local Jewish family. Below is a sampling of Paper family photographs, with a focus on Annie. These and other images may be accessed through the RCHS Mary Livingston Griggs & Mary Griggs Burke Research Center beginning in 2022.

—*Gabrielle Horner*



Annie Paper, 1915.



Undated, early photo of Annie Paper with Moses Calmenson and Ray Shapira Calmenson.



Annie and Lewis Paper, West Baden, 1915.



Annie Paper, 1915.



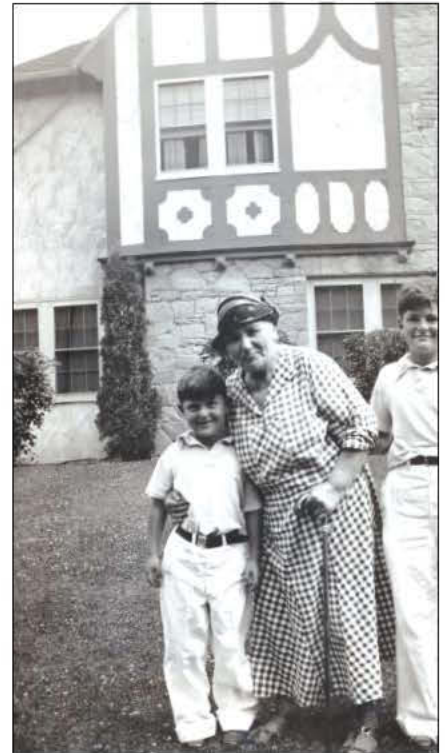
Annie Paper with daughter Mary, c. 1920.



Annie with grandson Jimmy and husband, Lewis, 1923.



Annie with the Great Sphinx of Giza in Egypt, 1926.



Annie with grandsons Buddy and Jimmy, 1933.

All images courtesy of Ramsey County Historical Society.