

RAMSEY COUNTY HISTORY

Ramsey County Historical Society

Cattlemen and Capitalists—
And the Founding of
New Brighton

Volume 22
Number 2



Ramsey County History

Published by the
RAMSEY COUNTY HISTORICAL SOCIETY
Editor: Virginia Brainard Kunz

Contents

Volume 22
Number 2

Cattlemen and Capitalists --
-- And the Founding of New Brighton
by Gene K. Skiba - Page 3

The Great Horse Market Years at
Prior and University
by John S. Sonnen - Page 13

Boxing in Minnesota in the Postwar Era
The Fighting Flanagans
by Scott Wright - Page 16

ISBN 0-934294-54-2

Ramsey County History is published several times a year and copyrighted 1987 by the Ramsey County Historical Society, 323 Landmark Center, 75 West Fifth Street, St. Paul, Minnesota 55102. Membership in the Society carries with it a subscription to Ramsey County History. Single issues sell for \$3. Correspondence concerning contributions should be addressed to the editor. The Society assumes no responsibility for statements made by contributors. Manuscripts and other editorial material are welcomed. All articles and other editorial material submitted will be carefully read and published, if accepted, as space permits.

ON THE COVER: *The Cattlemen's Hotel, later known as the Exchange Building, was a plush and ultra-modern establishment that came with the stockyards development in the late 1890s. In the last sixty years it has been the home of Beisswenger's Appliance and Hardware Store. The Marston Block (small photo) stood at the southeast corner of Brighton's main street intersection -- downtown New Brighton around the time of World War I.*

ACKNOWLEDGEMENTS: *The photographs with the story on New Brighton are used with the permission of their owners, the following residents and organizations of New Brighton: page 16, Larry Vanden Plas for the New Brighton Area Historical Society; pages 21 and 41, Stella Flygard; page 29, the New Brighton Bulletin; page 49, Julie Beisswenger. The photograph on page 15 is from the files of R.C. Blumberg, general manager of Zimmerman Realty and a grandson of Moses Zimmerman. The photographs on pages 16-22 are from the Minnesota Historical Society collections from the following sources: Minneapolis Star and Tribune. (page 17); the St. Paul Pioneer Press (page 20).*

The Ramsey County Historical Society

OFFICERS OF THE SOCIETY

Gregory K. Page
Chairman of the Board

William S. Fallon
President

Richard Lee
First Vice President

Robert E. Hess
Secretary

Randal Miller
Treasurer

THE BOARD OF DIRECTORS

Gayle Bromander

John Costello

Deborah Gelbach

Craig Jilk

Edward M. Laine

Frank Marzitelli

Richard T. Murphy, Sr.

Marvin Pertzik

John Pfaender

Laura Platt

Douglas Skor

Robert O. Straughn

Stephen Urion

Ann Cowie Wilson

BOARD OF RAMSEY COUNTY COMMISSIONERS

Diane Ahrens,
Chairman

Warren W. Schaber
Hal Norgard
Duane McCarty

Don Salverda
Ruby Hunt
John T. Finley

Terry Schutten, Executive Director,
Ramsey County

Your membership in the society includes a subscription to this magazine.

Your Membership Application

YES, I want to discover the richness of history in my own backyard by becoming a member of the Ramsey County Historical Society:

- Guarantor \$1,000 and up
 Benefactor \$500-\$999
 Sponsor \$250-\$499
 Patron \$100-\$249*
 Contributor \$50-\$99*
 Family \$25
 Individual \$20

*Join at the \$100 level and up and receive a color photographic print of a panorama of St. Paul circa 1888. (This is a genuine Limited Edition, only obtainable through RCHS).

In addition, if your place of employment participates in the Cooperating Fund Drive, you may designate your donation to the Ramsey County Historical Society.

Name _____

Address _____

City _____ State _____ Zip _____

Phone _____ (home) _____ (office)

Payment option:

My check is enclosed for \$ _____

Please charge my membership to:

Visa Mastercard Exp. Date _____

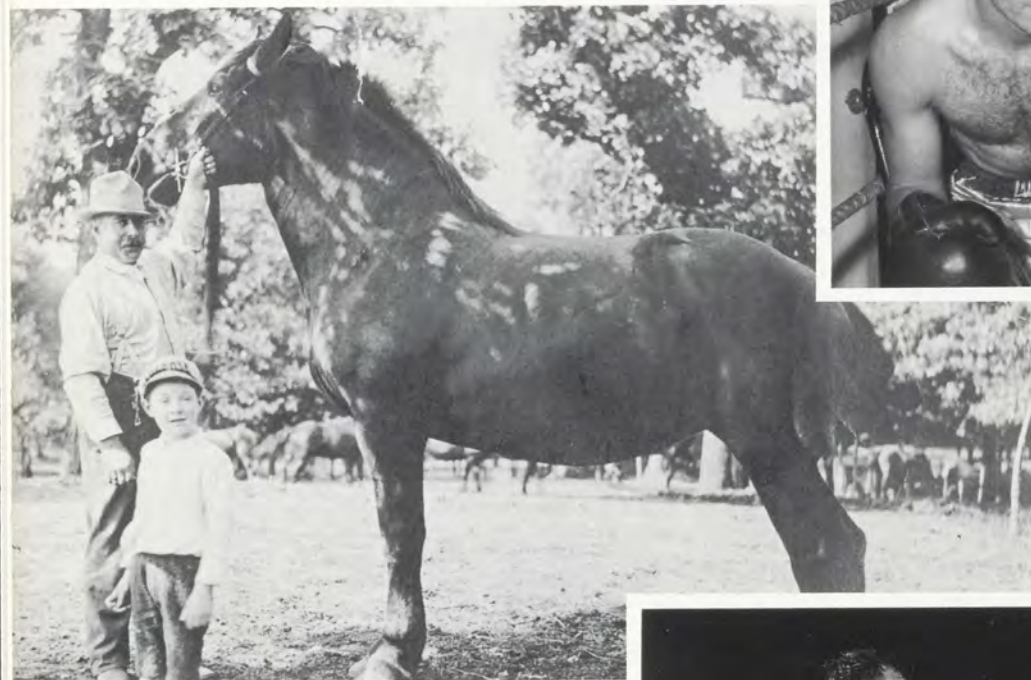
Acct. No.
(all digits)

--	--	--	--	--	--	--	--	--	--	--	--	--	--	--	--	--	--	--	--	--

Make checks payable to, and mail to:
Ramsey County Historical Society
323 Landmark Center
75 West Fifth Street
St. Paul, Minnesota 55102

Ramsey County History
published by
the Ramsey County Historical Society
323 Landmark Center
75 West Fifth Street
St. Paul, Minn. 55102

Mose Zimmerman with wide-backed mare. See pages 13-15.



Glen Flanagan.
See pages 16-22.



Glen Flanagan with Jackie Graves.



Bulwer Junction depot, New Brighton.
See pages 3-12.

The Gibbs Farm Museum, owned by the Ramsey County Historical Society, at Cleveland and Larpenteur in Falcon Heights.



NON-PROFIT ORGANIZATION
U.S. Postage
PAID
St. Paul, MN
Permit #3989